

2830 Ohio – P.O. Box 86  
Augusta, KS 67010  
(316) 775-7591

202 W. Central – P.O. Box 817  
El Dorado, KS 67042  
(316) 320-7649

300 W. Broadway  
Newton, KS 67114  
(316) 283-8517

E-mail: [info@WhiteEagleCU.com](mailto:info@WhiteEagleCU.com)  
24 HR Teller #  
1 (800) 564-2520

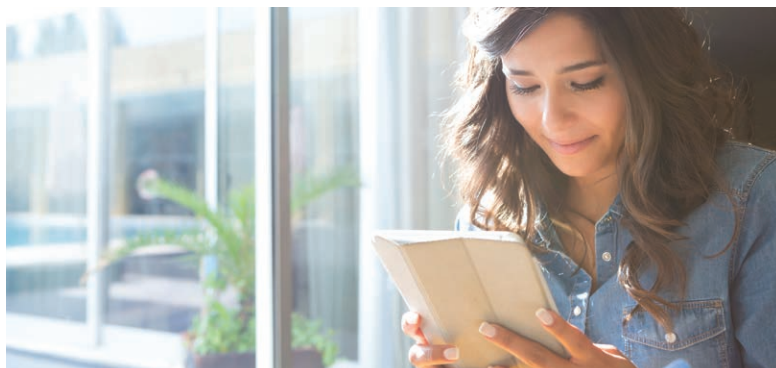
## Fighting Card Fraud Sits in the Palm of Your Hand With CardValet®

CardValet® is the ultimate in security for your debit card. You'll be able to monitor and manage your debit card activity quickly and easily from your smartphone.

- Turn purchases and withdrawals on and off remotely, giving you complete control should you misplace or lose your debit card.
- Set controls based on transaction amount, merchant type or location for enhanced fraud protection.
- Receive alerts each time your card is used.
- Download the app for your mobile device today!
- Tutorial available at [whiteeaglecu.com](http://whiteeaglecu.com).



# CardValet



## Get a Golden Ticket at our 81st Annual Meeting

Don't miss your chance to get a Golden Ticket. Mark your calendars and join us for our 81st Annual Meeting on April 12, 2016. The meeting will be held in the Augusta High School commons, with doors opening at 6 p.m. A catered dinner will begin at 6:30 p.m. with the meeting to follow. Tickets are \$5 and available at all three locations or may be purchased at the door. We look forward to seeing you at the meeting!

For members unable to attend the Annual Meeting, please stop by one of our offices Friday, April 8, 2016. We will be holding an open house and serving refreshments. White Eagle Members may cast their ballot for the positions open on the Board of Directors and the Committees.

Five lucky members with Golden Tickets will win a prize. Members who vote in our lobbies on April 8th or attend the Annual Meeting on April 12th will be eligible.

WHITE EAGLE CU  
GOLDEN TICKET

### upcoming CLOSINGS

Monday, May 30 - Memorial Day

Monday, July 4 - Independence Day



# An Auto Loan From White Eagle Credit Union is today's smartest choice

Whether you're buying your first car or upgrading to a newer car, truck or SUV, we offer several advantages that will put you behind the wheel quickly, easily and affordably.

## Make The Smart Choice With a Vehicle Loan from White Eagle and Enjoy:

- Rates as low as 2.74\*% APR\*\* with automatic payments for the lowest possible payment.
- No payments for a full 90 days, so you can pay vehicle registration, insurance and other expenses without stretching your budget.
- Friendly, personal service you'll only find from your neighbors at White Eagle.

\*With automatic payments. Lowest possible APR for qualified borrowers based on credit background. Not eligible for current White Eagle Credit Union loans. \*\*APR: Annual Percentage Rate. Offer expires 05/15/2016



## Rates as low as 2.74\*% APR\*\*

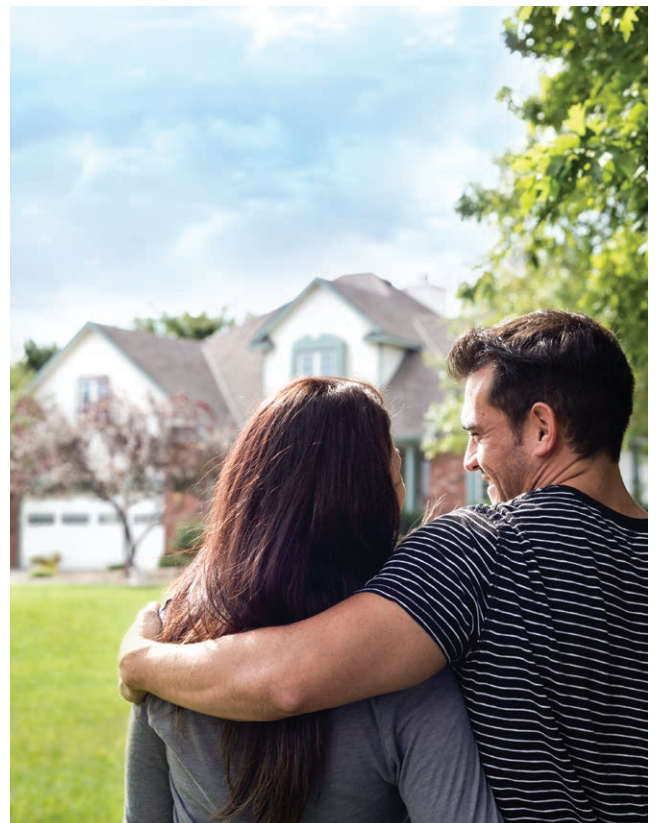
# Make Your Dream Home a Reality

Whether you're a first-time homebuyer, purchasing a second home, refinancing or acquiring an investment property, White Eagle can make the application process easier with an experienced team of mortgage lenders dedicated to meeting your needs. With interest rates still low, now may be the perfect time to buy or refinance a home. And with competitive rates on fixed- or variable-rate loans, terms up to 30 years and only 3 percent down for first-time buyers, White Eagle has all the features and solutions you need.

We offer first and second mortgages. Simply fill out a loan application online or stop in any location to speak with a loan officer. We can help you sort through the home buying process and your mortgage loan options.

## With home loans we offer:

- Easy online loan application
- Loans for purchase or refinance
- Attractive rates and terms
- Automatic payments from your White Eagle account
- No penalty for prepaying your loan



# White Eagle Updates

## White Eagle Recognized as Finance & Insurance Business of the Year

On Saturday January 30, White Eagle Credit Union was recognized as the Finance & Insurance Business of the year for 2015. This was awarded at the Augusta Chamber of Commerce's Annual Dinner held at The Point Events Center. Thank you to our members and the Augusta Chamber of Commerce for helping us achieve this honor.

## Visit White Eagle Before Band-O-Rama in Augusta

Stop by our booth on May 12th at 5:30 p.m. at the Chamber of Commerce Business Rocks Showcase before Band-O-Rama at the Augusta High School. Pick up some White Eagle Swag and visit with our team.

## Spring has Sprung

It is that time again! Beginning April 15th through May 15th, members can bring in confidential documents for shredding. Shred bins will be available in all three branch lobbies. Best of all, it's FREE! This is one of the perks of being a White Eagle Member. Follow us on social media and stay in the loop about Member perks throughout the year.

## Now Offering 15-Year Home Equity Line of Credit

Are you thinking about taking a dream vacation or remodeling your house? We have the loan for you! We are now offering a 15-year Home Equity Line of Credit (HELOC) in addition to our current 10-year plan. Create a line of credit that's always there when you need it, secured by the equity in your home. Ask a loan officer for more details about how you can get a 15-year HELOC today.

## 2015 IRA Deadline Reminder

The IRS allows you to designate a contribution to the previous year until April 18, 2016. If you opt to make your contribution after January 1st, but before the April 18th deadline, you must designate the contribution year that you are targeting. This goes for most types of IRA accounts. White Eagle offers both ROTH and Traditional IRAs. If you have any questions regarding IRAs, please contact one of our member service representatives.

## April is National Credit Union Youth Month

Join us online the month of April for National Credit Union Youth Month. This year's theme encourages kids to get in shape financially. Posts on social media and our blog will include topics to help our younger members start on the right path to financial independence. Every Friday, a fun, kid-friendly financial joke will be posted. Take the time to help our youth recognize the value and importance of financial services and their future.



President Rick Blue pictured with award.



Start your Spring cleaning & bring in documents to shred. At any branch April 15 - May 15.

### Credit Union Strong

(noun): When your local, not-for-profit financial cooperative strengthens your money skills—so you're ready for an awesome future.

26377



Savings Rates		
Effective January 8, 2016		
Type of Account	Rate	APY
Regular Share	0.20%	0.20%
IRAs	0.50%	0.50%
<i>Compounded daily, paid quarterly</i>		
Dividend Checking	0.10%	0.10%
Silver Eagle Checking	0.10%	0.10%
Golden Eagle – Money Market		
\$2,500 – \$9,999	0.15%	0.15%
\$10,000 – \$24,999	0.20%	0.20%
\$25,000 plus	0.25%	0.25%
<i>Compounded daily, Paid monthly</i>		
Christmas Club	1.49%	1.50%
<i>Compounded daily, paid annually</i>		

Term Share Certificates		
Term	Rate	APY
6 Month	0.45%	0.45%
1 Year	0.70%	0.70%
2 Year	1.10%	1.10%
3 Year	1.49%	1.49%
4 Year	1.64%	1.65%
5 Year	2.13%	2.15%

Last quarter, we paid 0.15% on regular shares and 0.50% on IRAs. Dividends are paid on share account balances of \$100 or more. Dividends are paid based on earnings and are subject to Board approval. APY = Annual Percentage Yield.

## White Eagle Vacation Reminders

Whether you are taking a vacation or staying around town for a stay-cation, White Eagle has great benefits for you!



### Member Perks include:

- Purchase Warren Theatres® movie tickets for \$7 each.
- Save 15% or more on admission to Schlitterbahn® in Kansas City, Kansas. Admission ages 3-11 and 55 & older are \$32.00 and ages 12-54 are \$38.00.
- Save 15% or more on admission to Silver Dollar City® Attractions. Adults are \$51.85 Children ages 4-11 are \$42.50.
- Save up to \$14.49 on an any day ticket to World's of Fun® or Oceans of Fun®. Admission is \$42.50.



### Don't forget your Visa® Travel Money Cards this summer!

- Minimum of \$100 per load, with a maximum of \$5,000 per card
- Unlimited reloads with a \$2 fee
- Initial card purchase \$5 fee

### Visa® Gift Cards

- Minimum of \$10 per load, with a maximum of \$500 per card
- Initial card purchase \$4 fee; Non-reloadable

54240

## Bonus Stashed CASH

Look closely. There are three (3) hidden numbers "stashed" in this issue. If you find your account number, call a branch office and we will deposit \$10 into your savings account.

